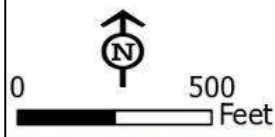


Appendix A
TALKEENTA SEWER FIGURES

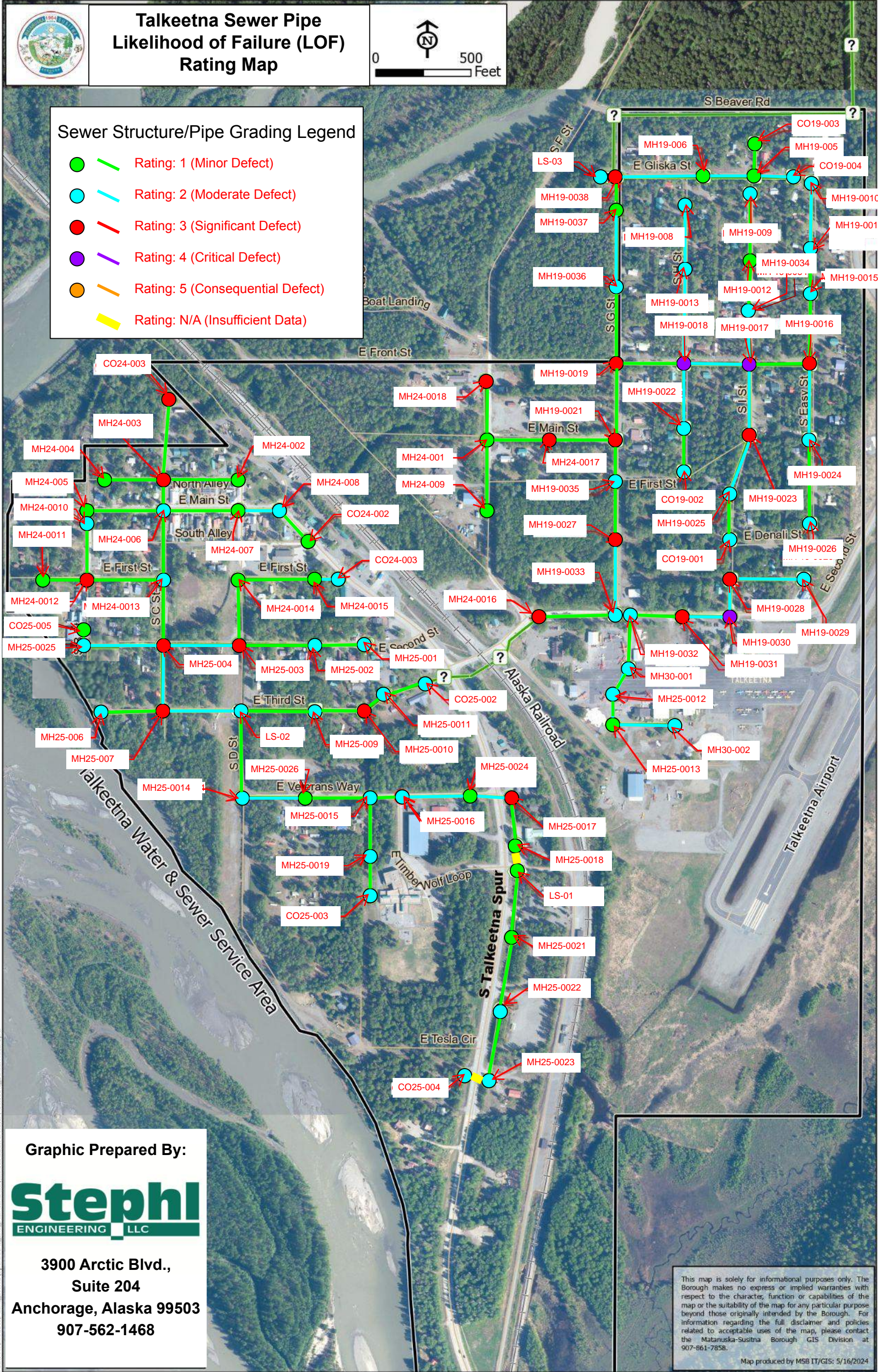


Talkeetna Sewer Pipe Likelihood of Failure (LOF) Rating Map



Sewer Structure/Pipe Grading Legend

- Rating: 1 (Minor Defect)
- Rating: 2 (Moderate Defect)
- Rating: 3 (Significant Defect)
- Rating: 4 (Critical Defect)
- Rating: 5 (Consequential Defect)
- Rating: N/A (Insufficient Data)



Graphic Prepared By:



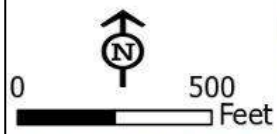
3900 Arctic Blvd.,
Suite 204
Anchorage, Alaska 99503
907-562-1468

This map is solely for informational purposes only. The Borough makes no express or implied warranties with respect to the character, function or capabilities of the map or the suitability of the map for any particular purpose beyond those originally intended by the Borough. For information regarding the full disclaimer and policies related to acceptable uses of the map, please contact the Matanuska-Susitna Borough GIS Division at 907-861-7858.

Map produced by MSB IT/GIS: 5/16/2024

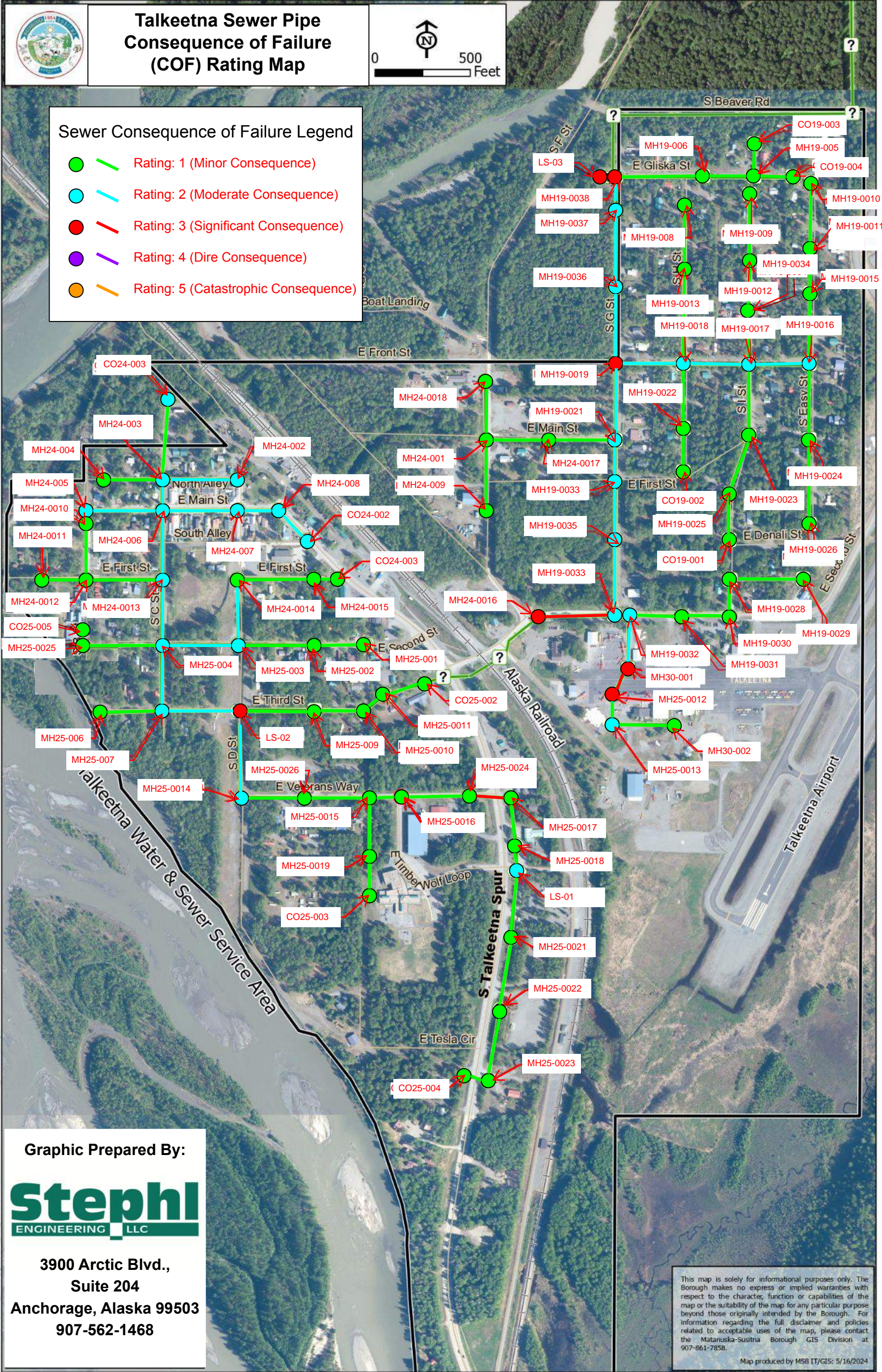


Talkeetna Sewer Pipe Consequence of Failure (COF) Rating Map



Sewer Consequence of Failure Legend

- — Rating: 1 (Minor Consequence)
- — Rating: 2 (Moderate Consequence)
- — Rating: 3 (Significant Consequence)
- — Rating: 4 (Dire Consequence)
- — Rating: 5 (Catastrophic Consequence)



Graphic Prepared By:



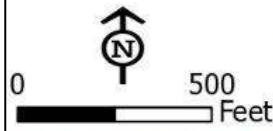
3900 Arctic Blvd.,
Suite 204
Anchorage, Alaska 99503
907-562-1468

This map is solely for informational purposes only. The Borough makes no express or implied warranties with respect to the character, function or capabilities of the map or the suitability of the map for any particular purpose beyond those originally intended by the Borough. For information regarding the full disclaimer and policies related to acceptable uses of the map, please contact the Matanuska-Susitna Borough GIS Division at 907-861-7858.

Map produced by MSB IT/GIS: 5/16/2024



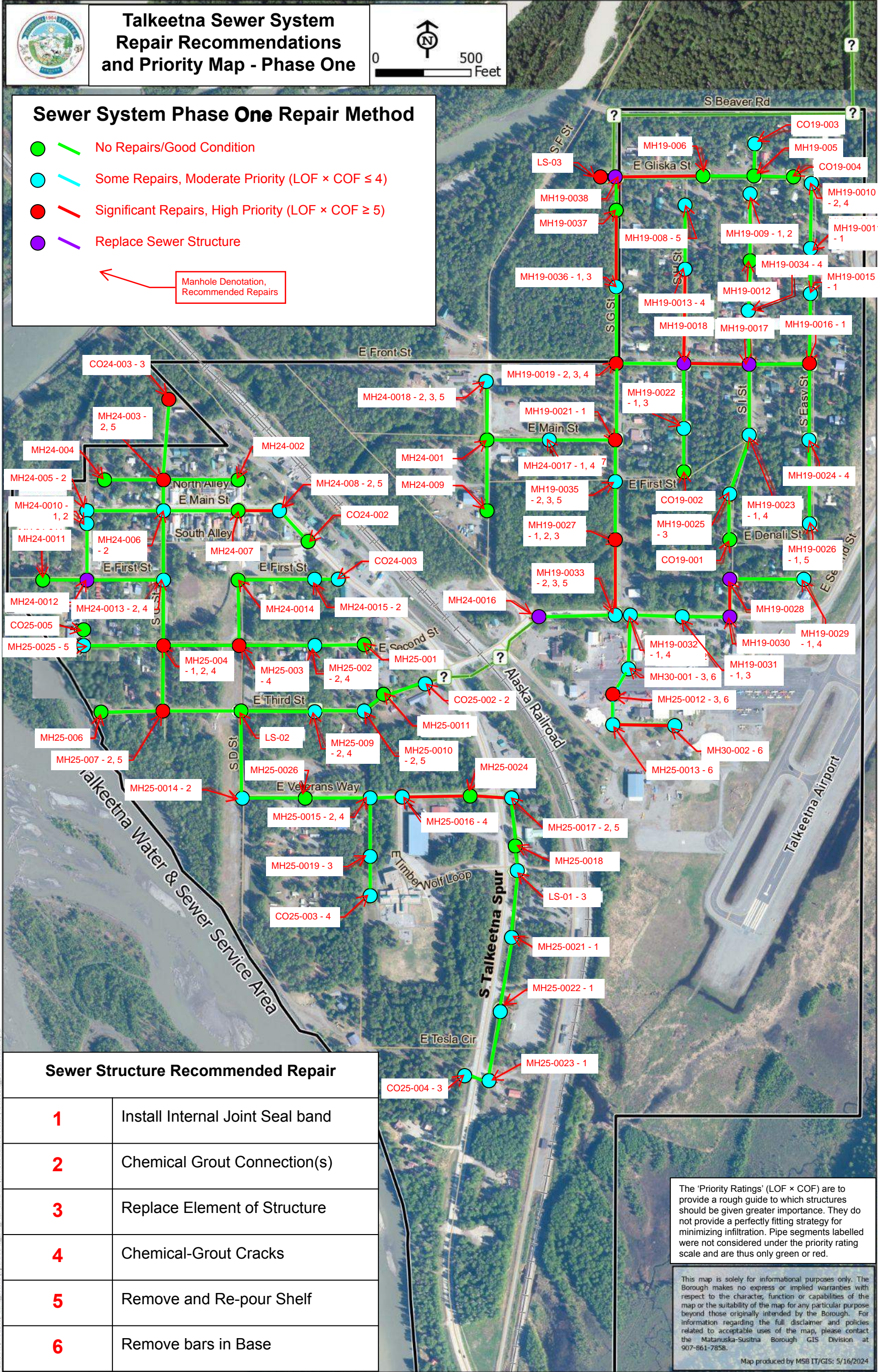
Talkeetna Sewer System Repair Recommendations and Priority Map - Phase One



Sewer System Phase One Repair Method

- — No Repairs/Good Condition
- — Some Repairs, Moderate Priority ($LOF \times COF \leq 4$)
- — Significant Repairs, High Priority ($LOF \times COF \geq 5$)
- — Replace Sewer Structure

← Manhole Denotation, Recommended Repairs



Sewer Structure Recommended Repair

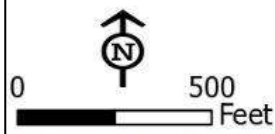
1	Install Internal Joint Seal band
2	Chemical Grout Connection(s)
3	Replace Element of Structure
4	Chemical-Grout Cracks
5	Remove and Re-pour Shelf
6	Remove bars in Base

The 'Priority Ratings' ($LOF \times COF$) are to provide a rough guide to which structures should be given greater importance. They do not provide a perfectly fitting strategy for minimizing infiltration. Pipe segments labelled were not considered under the priority rating scale and are thus only green or red.

This map is solely for informational purposes only. The Borough makes no express or implied warranties with respect to the character, function or capabilities of the map or the suitability of the map for any particular purpose beyond those originally intended by the Borough. For information regarding the full disclaimer and policies related to acceptable uses of the map, please contact the Matanuska-Susitna Borough GIS Division at 907-861-7858.



Talkeetna Sewer System Repair Recommendations and Priority Map - Phase Two



Sewer System Phase Two Repair Method

- No Repairs/Good Condition
- Repair Needed
- ↙ Manhole Denotation
- Pipe Repair, Distance Up/Downstream



Graphic Prepared By:



3900 Arctic Blvd.,
Suite 204
Anchorage, Alaska 99503
907-562-1468

This map is solely for informational purposes only. The Borough makes no express or implied warranties with respect to the character, function or capabilities of the map or the suitability of the map for any particular purpose beyond those originally intended by the Borough. For information regarding the full disclaimer and policies related to acceptable uses of the map, please contact the Matanuska-Susitna Borough GIS Division at 907-861-7858.